

DUTY SHEET FOR LOCAL ASSEMBLY

Japan - India

AMITA COMPANY

NO	WORK & PARTS	REMARKS	JAPAN	LOCAL
1	Machine parts manufacturing		*	
2	Shipping Work		*	
3	Machine assembly	Assembly technicians dispatched from Amita		*
4	Machine adjustment	Adjustment technicians dispatched from Amita		*
5	Shipping	Components of net machine	*	*
6	Painting Supplies	Supplied by ATC		*
7	Painting	Employ one Pro. Painter		*
8	Electric parts, turn table for the Winder and motor (assemble kit)	Manufactured in Japan, supplied by Amita	*	
		Frame manufacturing and assemble work		*
9	Following parts for assembly * Warp Shutter for Creel Stand * Lower Hook * Shuttle Support * Twine Separator * Warp Tension Shutter			*
10	Roller Covering Work			*
	* Mesh Forwarding Roller			*
	* Roller covering material supply		*	
	* Roller covering bond supply		*	
	* Rust Protectant Supply		*	
11	Upper Hook assembling			*
12	Guide Hook, Cam Assembling			*
13	Reed assembling			*
14	Ratchet Inner Ring		*	
15	Ratchet Small Rollers. Ratchet Tip		*	
16	Shuttle Box Setting			*
Others	1) According to the offer, the following equipment are supplied from ATC, India.			
	a) Creel Stand			*
	b) Machine Covers			*
	c) Winder (Electric parts to be sent from Amita)			*
	d) Some uncritical components			*

* For machine specs, spare and accessories, please refer to the documents.

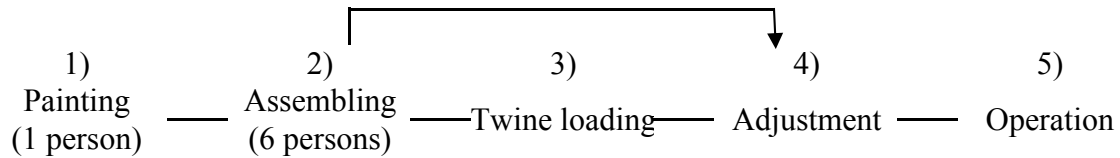
* Technical drawings will be sent from Amita for local manufacturing when it is necessary.

Customer Side { * Foundation for the machine must be ready before machine reach to the factory.

* Material for testing netting must be ready before you start the adjustment of machine.

Outline for Assembling & Adjustment

1) Required number of workers for 1 or 2 sets: 7 persons



* Remarks*

Painting: professional painter would be ideal.

Setting Parts

Key assembling	(1 person)
Roller covering	(1 person)
Shuttle Box setting	(2 persons)
Warp Spring and shutter set	(1 person - female)
Lower Hook setting	(1 person - female)

* Remarks*

This is a step-by-step process, so the proper order must be maintained.

If you have any doubts as to the proper order, please consult with your supervisor.

The more workers you can employ on the project, the sooner the project can be complete and in most cases, sooner than the projected schedule.

Conversely, the fewer number of workers available, the longer the project will take to complete, probably longer than the projected schedule.

2) Required period for main each section in the above number of workers

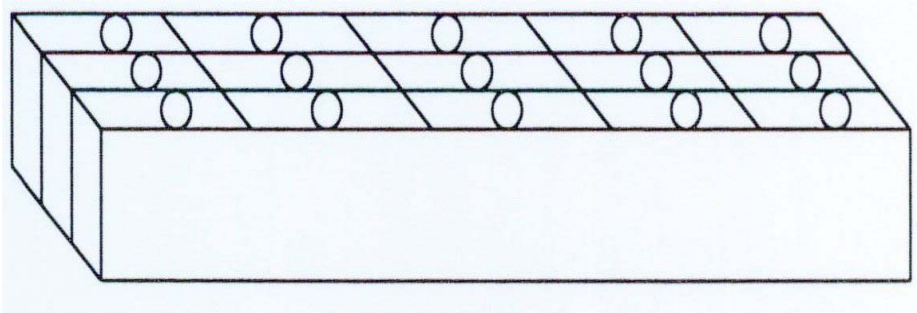
- a) Painting and frame assembling : 1 day
- b) Painting and component assembling : 3 days
- c) Key assembling : 1.5 days
- e) Shuttle Box setting : 1.5 days
- f) Warp Spring and Shutter Spring : 2 days
- g) Lower Hook setting : 1.5 days

Expected period for Assembling and adjusting for 1 or 2 sets : 25 days

Packing Conditions for Local Assembly of MSB/MSA

* Remarks *

When you plan to install the net machine, you will open one container in each box. Then, since painting, liquid, bolts, nuts, etc. are packed in a separate box, you will collect necessary ancillary goods from each separate box. After opening the separate boxes, the bolts, nuts, etc. should be kept in their own boxes.



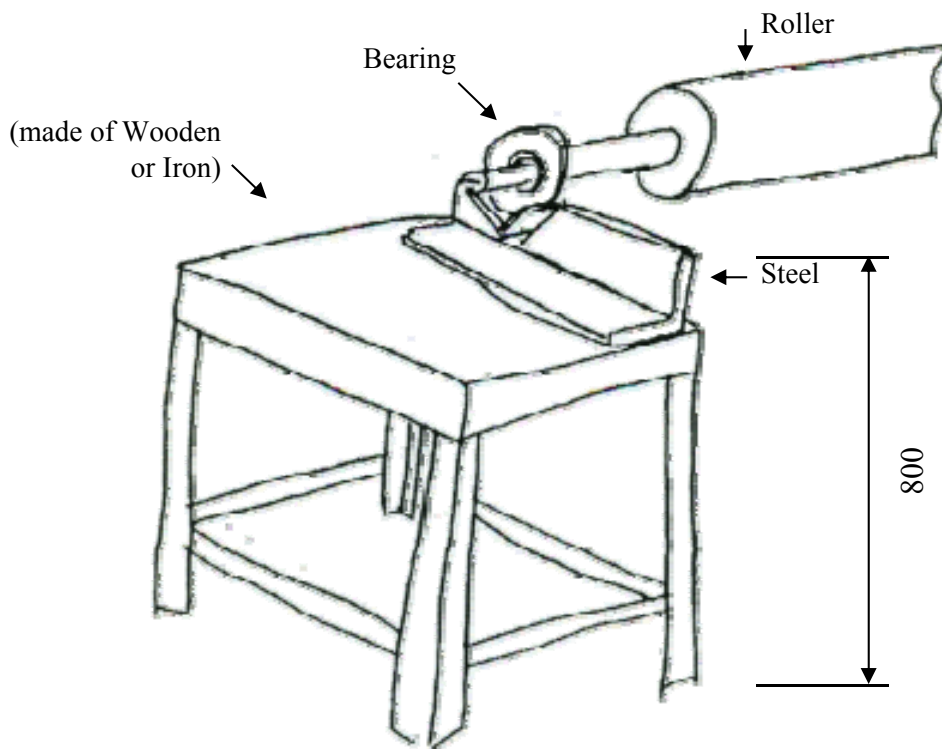
Necessary Tools

(to be prepared at your factory)

1) Hoist or chain block	1 set
2) Snap Ring Plyer	2 pcs.
3) Spana (Size 7, 8, 13, 14, 17, 19, 24, 27)	2 sets
4) C. Clamp (BC100)	2 pcs.
5) Tape Measure	10 pcs.
6) Hammer	2 pcs.
7) Nylon Hammer	2 pcs.
8) Work Horse for Key-adjusting	1 set
9) Eletric Disk Grinder	1 pce.
10) Drill bit (4.3dia, 6.8dia, 8.8dia)	2 pcs./each
11) Tap (M5, M8, M10, M12, M14, M16, M18, M20)	2 pcs./each
12) Level	1 pce.
13) Flash Light	2-3 pcs.

Desk for Roller Covering

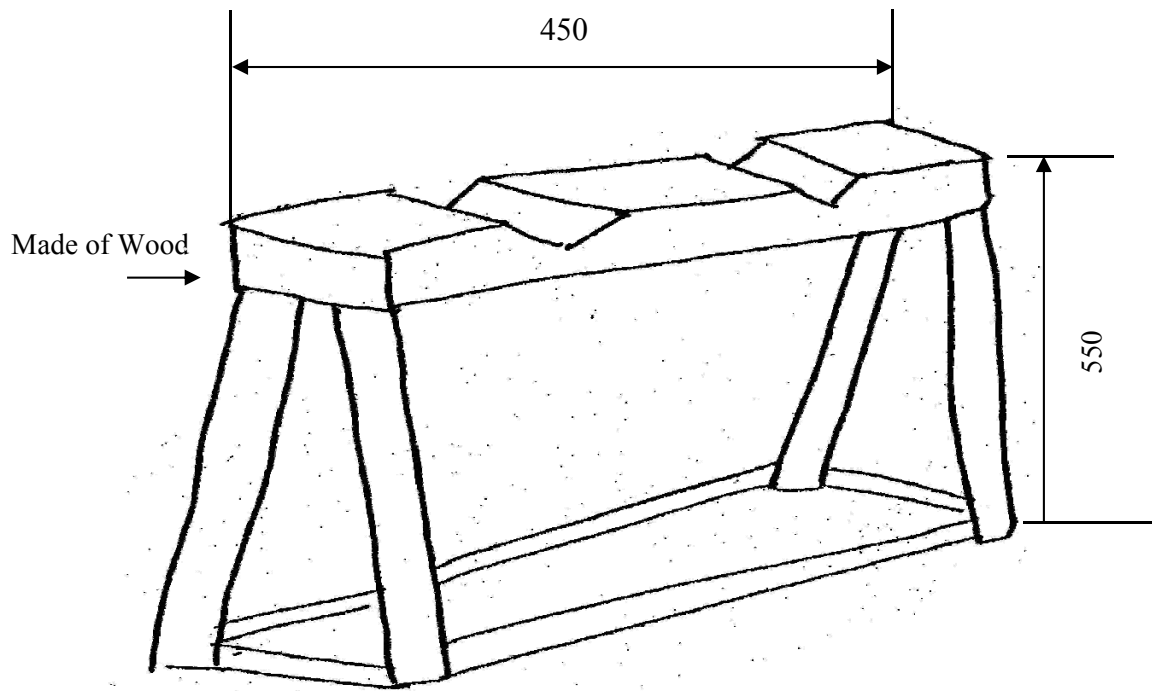
Necessary Quantity : 2 pcs.

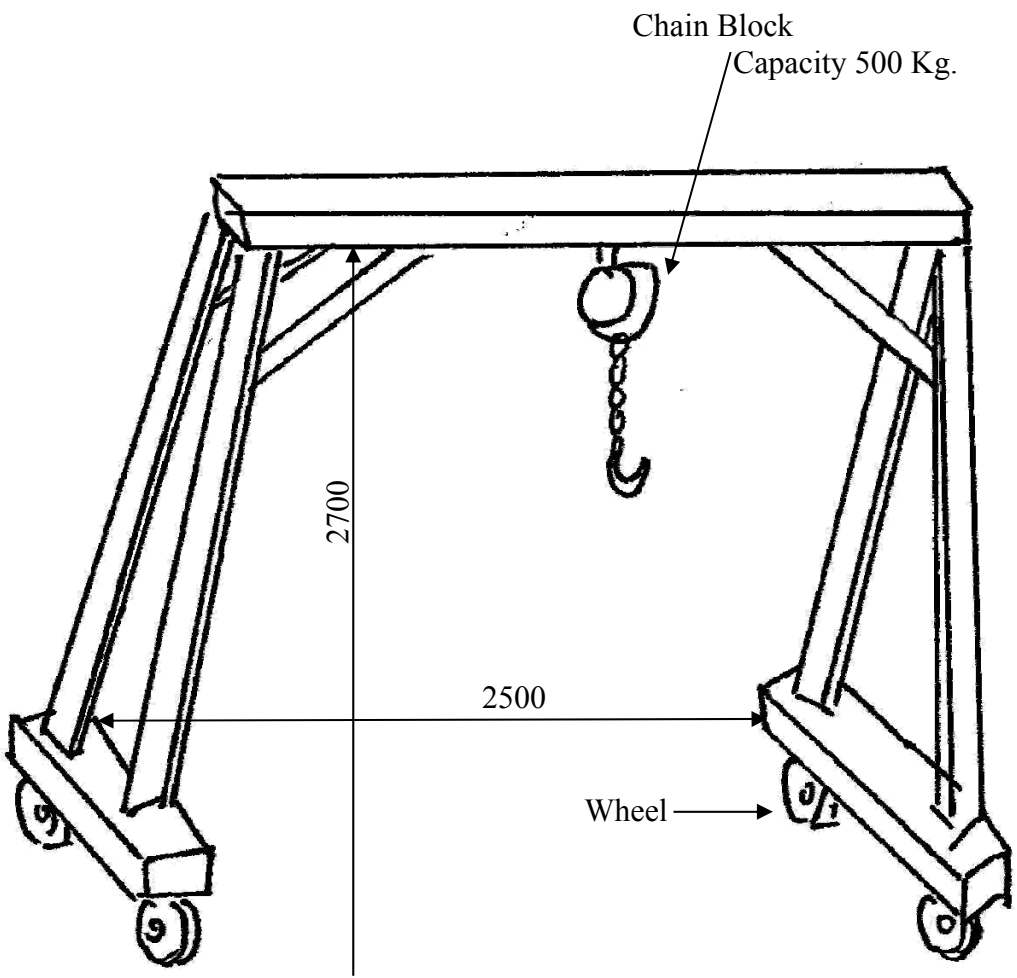


The important point is the height of 800mm.
The length and width of the desk can be freely chosen by you.

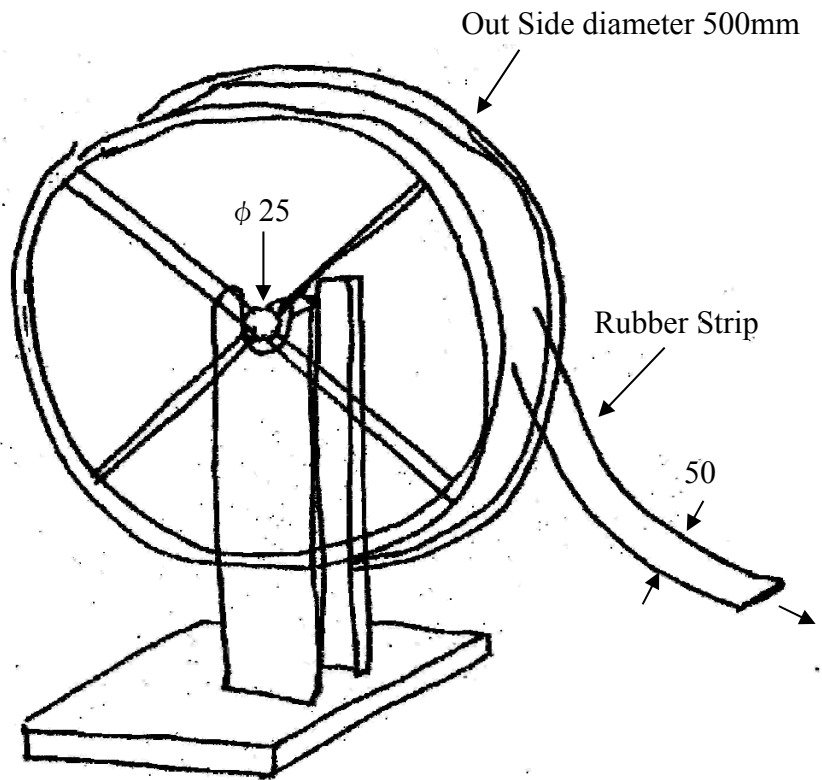
Work Horse

Necessary quantity 4 pcs.





Wheel for Rubber Strip



Necessary quantity : 1 pce.