

MODEL MSE Specifications

Type	MSE6-60S	MSE6-80S
Pitch	6.3mm	6.3mm
Number of shuttles	604	820
Diameter of bobbin	185 mm	185 mm
Twine Loading Capacity		
Nylon Mono	46grm	46grm
	84% more than conventional machine	84% more than conventional machine
Nylon Multi	32grm	32grm
	39% more than conventional machine	39% more than conventional machine
Twine Range and Capacity		
Nylon Mono	0.1-0.2	0.1-0.2
Nylon Multi	110d/2-210d/6	110d/2-210d/6
*Minimum Mesh Size	110d/2 6.0mmsq	110d/2 6.0mmsq
	210d/2-210d/3 4.5mmsq	210d/2-210d/3 4.5mmsq
	210d/6 5.0mmsq	210d/6 5.0mmsq
Mesh range (knot to knot)	5mm~150mm	5mm~150mm
Looming speed	Up to 28RPM	Up to 24RPM
Knot configuration	SINGLE	SINGLE
Type of upper hook	Plate type	Plate type
Main motor	3.7kw * 1	3.7kw * 1
		Driving System:VFD(Inverter System)
Dimensions ( L x W x H mm)	5,820(W) x 3,725(L) x1,800(H)	7,156(W) x 3,725(L) x1,800(H)
Weight	Net : 7,500kg	Net : 10,000kg
	Gross : 8,800kg	Gross : 11,800kg
Packing Size	20M3	31M3

Note 1) Looming speed varies in relation to mesh size and twine diameter.  
2) Minimum size carries in relation to the operating speed and twine diameter.  
3) All specifications are subject to change without notice.

\*Advantage & Features of VFD (For MSE6-80S)

- Speed control with touch of a key
- Precise speed setting (Up to 0.1 digits)
- RPM display on panel to monitor the actual machine speed
- Control starting current. The machine starts gradually and smoothly with less impact.
- Extended equipment life & reduced maintenance cost.
- Elimination of magnetic contactor. Hence better control on inching frequencies.
- Better energy saving for variable torque loads.
- Energy consumption reduces when speed is reduce.

Production for Model MSE6-60S and MSE6-80S  
When the nets with “210d/2 x 1” str. (12.7mm sq.) x 400md x 100 mtr.” are knitted.  
[Individuall Bobbin Change]

	MSE6-60S (604 shuttles)	MSE6-80S (810 shuttles)
200 md nets	28.8 kgs/24h (135 pcs)	33.6 kgs/24h (153 pcs)
400 md nets	19.2 kgs/24h (4.6 pcs)	33.6 kgs/24h (7.6 pcs)

\*The above chart shows assumption of production capacity under normal condition.

Special Design for  
Single Knot Only  
**110d/2-210d/6(Optional :210d/9)**  
185mm Bobbin dia. with 32g twine loading capacity in Nylon Multi.  
**600 Shuttles(Act:604)**  
Up to RPM 28!!



Model MSE6-80S

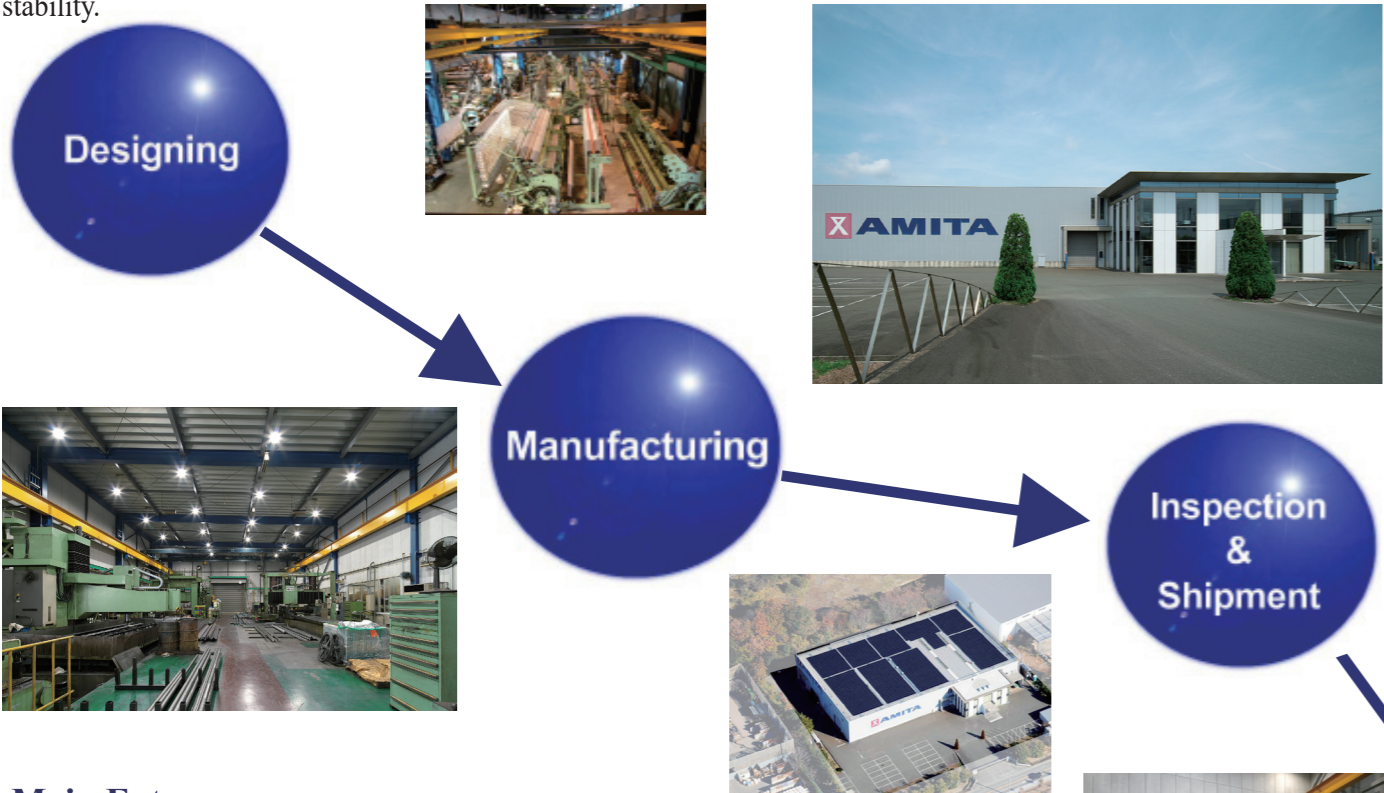
COMPLETE MODEL NEW MSE  
Based on Model MSB



Novmber 2017

# System to build up Amita Net Machine in India

\* Over 60 years of technological knowledge, make possible to assemble net machine in India with a high degree of confidence and stability.



## Main Future

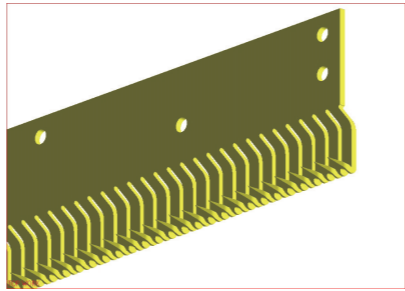
- \* Cope with small mesh size “5 mmsq” with fine nylon multi such as 110d/2 ~ 210d/6 in quality netting.
- \* Employ 185mm bobbin dia-twine loading capacity: 32 g/bobinn.
- \* Plate type upper Hook single-knot net machine.
- \* Maximum speed: up to 28 RPM
- \* High percentage of interchangeable parts between different type of machines.
- \* High rigidity and long durability
- \* High speed and the stability of machine with high quality
- \* User friendly and easy handling
- \* The gauges have a scale for easy adjusting
- \* Labor saving whole-lot bobbin change -( option)
- \* High efficiency due to stable M/C condition and high loading capacity of bob-bins

## Design to be able to cope with future demand

- \* AWD (Automatic Bobbin Winding Machine)
- \* Monitoring System
- \* CNC Servo Motor System

## C2 Scheme and C3 Scheme are avaiable

- \* C2-Assembled at customer place
- \* C3-Assembled at our branch (ATC) in India



Single Plate Type



ATC New Factory

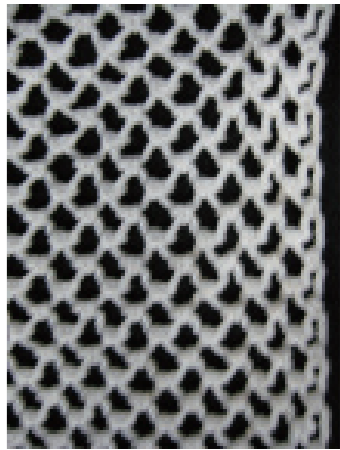
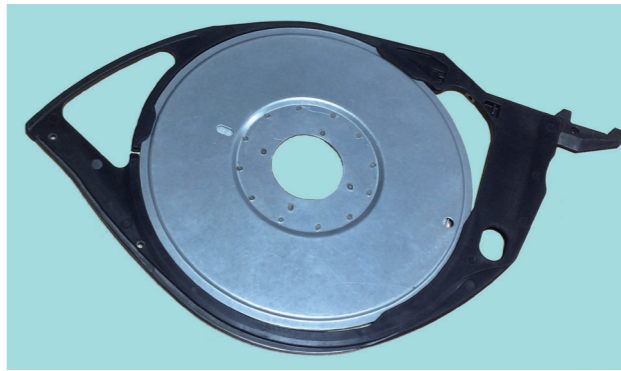
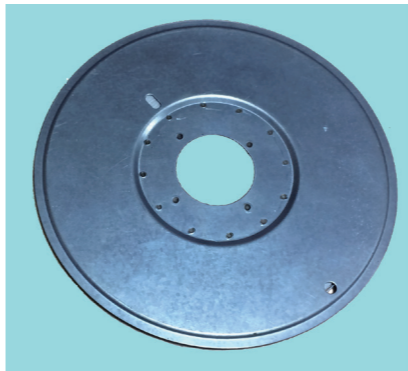
## Designing Concept

### MSE6-60S

When using machine especially for fine nylon multi. Single knot netting, the type of machines that have been used to have a very small bobbin dia and low RPM speed. That machine is based on old concept. To renovate these points, new Single-knot net machine of MSE 6-60S(6mm pitch x 604 shuttles, 185mm bobbin dia., up to RPM28) was developed under the concept of High Reputed Model MSB.

### MSE6-80S

400mesh depth of nylon Multi Nets are getting in common all over the world. In this development of MSE6-80S, 400md x 2 nets can be obtained with one set of MSE6-80S at a time. This contributes to decrease the manufacturing cost extremely.



With Special Device  
(Special Device standard Equipment)  
\*\*End of line in small mesh comes straight.

